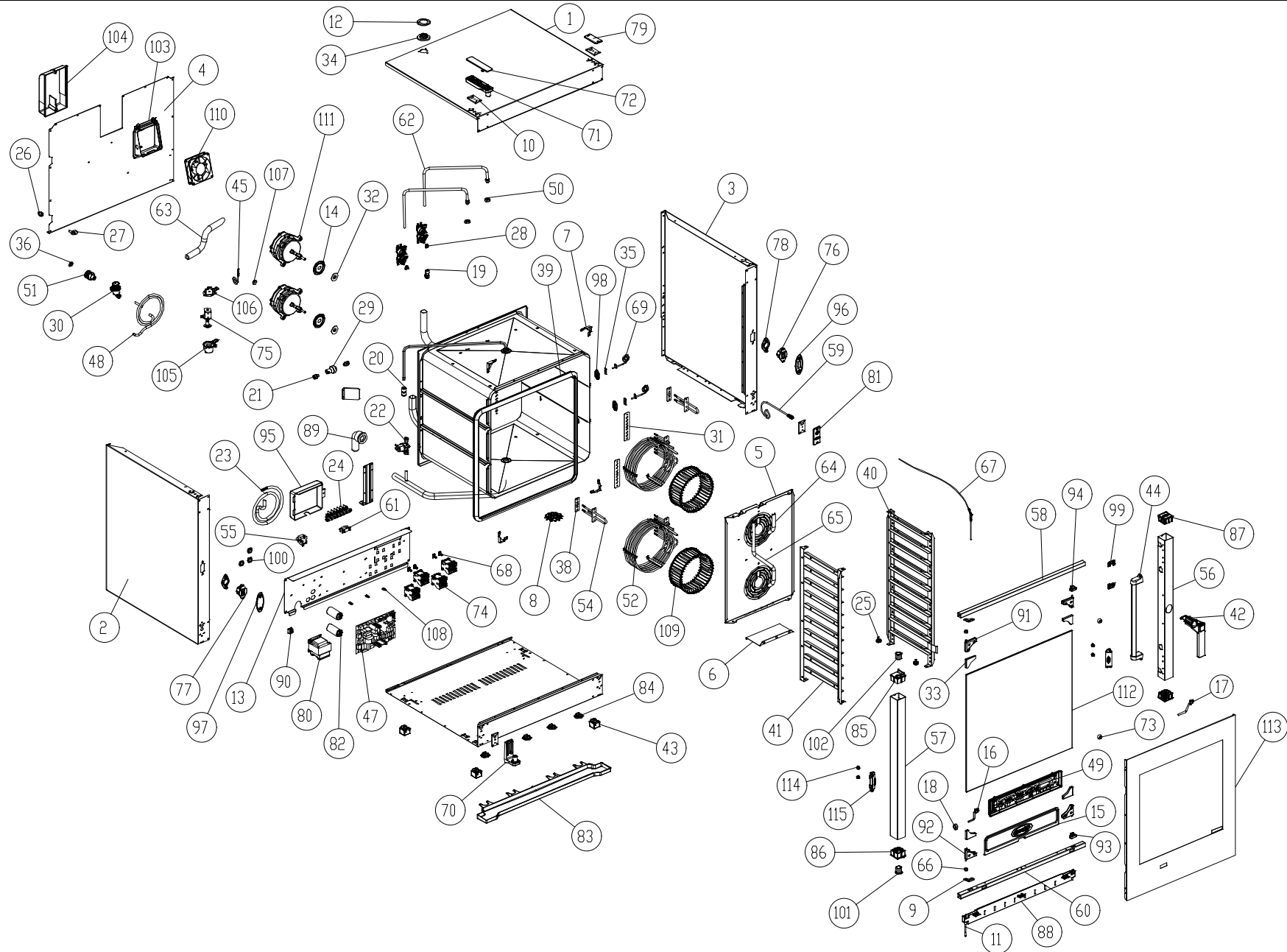


MOD: XVC705

EXPLODED VIEW DISEGNO ESPLOSO



MOD: XVC705

EXPLODED VIEW DISEGNO ESPLOSO



DESCRIZIONE CODICI

1	OD1910A0	COPERCHIO INOX XVC305/505/705
2	OD1905A0	FIANCO SX INOX XVC705
3	OD1906A0	FIANCO DX INOX XVC705
4	OF1320A0	SCHIENA INOX XVC705
5	OG1365A0	CARTER ARIA INOX XVC705
6	OG1376A0	DIST. CARTER ARIA INOX XVC705
7	OH1450A0	ANGOLO FACCIATA MUFFOLA INOX XB-XV-XG
8	OH2551A0	TAPPO PER TUBO DI SCARICO LIQUIDI INOX C
9	OH2650A0	CERNIERA INOX VETRO INTERNO XBC/XVC
10	OH2560A0	CONTROSTAFFA ZINCATA PORTA C.T.
11	OH2655A1	TUBO D-INT=6 SP=1 INOX SCARICO
12	OH3790A0	LAMIERA TENUTA CAMINO
13	OH4470A0	PORTA COMPONENTI INOX XVC305/505/705
14	OH4305A1	DISCO TENUTA ALBERO MOTORE INOX STP
15	OH4310A0	PROFILO INOX PARACALORE CRUSCOTTO STP
16	CE1310A1	CAVO COLLEGAMENTO POTENZA CONTROLLO L3.5
17	CE1665A0	CAVO ALIMENTAZIONE BARRA LED 1 MT
18	CE1285A0	FERRITE EMI ROUND MOD. 2643801502
19	EL1020A0	RACCORDO INTERMEDIO "T" TUBO ø8
20	EL1055A0	RIDUZIONE J.G. DA D=10 A D=8 PM201008E
21	EL1210A0	RACCORDO J.GUEST TERMINALE DIRITTO
22	EL1252A0	ELETTRIVALVOLA H2O 1 VIA RID. VERDE
23	CE1355A1	CAVO 5X2,5MMQ H07RN-F L=1,5MT
24	MR1004A0	MORSETT. 7FTW GV VO VL CU 1+2+3/4+5+6
25	VII035A1	NOTTOLINO M6x12,5 CON TAGLIO OTT.CROM.FE
26	EL1185A0	RACCORDO A GOMITO J.GUEST Ø8 - Ø8
27	EL1195A0	RACCORDO A GOMITO CON J.GUEST
28	EL1360A1	ELETTRIVALVOLA H2O TRI-STADIO
29	EL1370A0	RIDUTTORE PRESSIONE 2 BAR CUBEAIR
30	EL1375A0	FILTRO ACQUA Ø8 MESH100
31	GN1085A1	GUARNIZIONE PTFE+CARB 145X28X1
32	GN1140A1	GUARNIZIONE PORTAMOTORE STAMP.
33	GN1180A0	GUARNIZIONE CERNIERE VETRO INT.
34	GN1275A0	GUARNIZIONE CAMINO SILICONE NERO XVC
35	GN1285A0	GUARNIZIONE SONDA DI TEMPERATURA NTC
36	GN1200A0	GUARNIZIONE D=24 RACCORDO 3/4 GOMMA+RETE
38	GN1326A0	GUARNIZIONE RES. 70X22X0.8
39	GN1000B0	GUARNIZIONE NERA 50 SHORE FORNI XB-XG-XV
40	GRL1230A0	SUPPORTO LATERALE DX INOX 10TG GN1/1
41	GRL1231A0	SUPPORTO LATERALE SX INOX 10TG GN1/1
42	VM1180A0	IMPUGNATURA MANIGLIA XVC204/304/504/704
43	PD1001A0	PIEDINO 35X35 H26 PLASTICA+GOMMA GRIGIO
44	LP1003B0	BARRA ILLUMINAZIONE LED L600
45	PE1710A0	SENSORE NUMERO GIRI MOTORE
47	PE1740A0	ASSIEME SCHEDA CONTROLLO PE1705
48	TB1815A0	TUBO PE 7,93X4,75 TRASPARENTE
49	PE1740A0	ASSIEME SCHEDA CONTROLLO PE1705
50	RC1170A1	DADO M14 H=8 CH=22 INOX
51	RC1210A1	RACCORDO 3/4 VALVOLA DI NON RITORNO
52	RS1205A0	RESISTENZA 6 SPIRE 2+2+1,6 kW 230 V
54	RS1215A0	RESISTENZA 1 SPIRA 147 W 105 V
55	TR1136A0	TERMOSTATO SIC. UNIP. 330°C

56	TB1195A0	COLONNINA DX INOX PORTA XVC705
57	TB1196A0	COLONNINA SX INOX PORTA XVC705
58	TB1220A0	LIST. SUP. PORTA XVC305/505/705 20x20x1
59	VE1020A1	MICROINTERRUTTORE PORTA MAGNETICO
60	TB1221A0	LIST. INF. PORTA XVC305/505/705 20x20x1
61	VE1075A0	PRESSACAPO FV 268 RO+VITI FISSAGGIO
62	TB1515A0	TUBO ESTERNO UMIDITA + RACCORDO
63	TB1925A0	TUBO SILICONE VENTURI D25 XVC705
64	TB1745A0	TUBO INTERNO UMIDITA CENT. XVC205/305
65	TB1756A0	TUBO INTERNO UMIDITA SX. XVC705
66	TF1010A0	BOCCOLA TEFLON CERNIERA VETRO
67	TR1041A2	SONDA AL CUORE STAMPATA L=2000
68	VM1075A1	CLIP DI FISSAGGIO PER TELERUTTORI
69	TR1105A0	SONDA TEMPERATURA PT100 L=1000
70	VM1160A1	STAFFA INF. PORTA XVC204/304/504/704
71	VM1165A1	STAFFA SUP. PORTA XVC204/304/504/704
72	VM1166A0	COPERCHIO STAFFA SUPERIORE PORTA
73	VE1030A1	CALAMITA D=22,9mm PER MICROPORTA
74	VE1115A0	MINICONTATTORE QUADRIPOLORE 20 A 230 V
75	VE1565A0	
76	VM1190A1	SCROCCO MANIGLIA DX XVC204/304/504/704
77	VM1191A1	SCROCCO MANIGLIA SX XVC204/304/504/704
78	VM1192A0	COPERCHIO SCROCCO MANIGLIA XVC204/304/5
79	VM1195A0	PIASTRINA COPRIFORI XVC204/304/504/704
80	VE1360A0	TRASFORMATORE 230V - 12V 60VA
81	VM1201A1	PIASTRINA SUPPORTO MICROPORTA MAGNETICO
82	VE1110A0	CONDENSATORE 6,3 µF 450VAC 50/60Hz
83	VM1216B0	CASSETTO RACCOGLIUGOCCE XVC104/304/504/7
84	VM1220A0	CLIP FISSAGGIO CASSETTO RACCOGLIUGOCCE
85	VM1170B0	TAPPO FULCRO SUP. PORTA XVC204/304/504/7
86	VM1171B0	TAPPO FULCRO INF. PORTA XVC204/304/504/7
87	VM1175A0	TAPPO ESTETICO COLONNINA PORTA
88	VM1206B0	PROFILO SALVAGOCCIA PORTA XVC304/504/704
89	VM1260A0	CURVA A 90° RACCORDO SCARICO
90	VM1750A0	MORSETTIERA A PETTINE
91	VM1230A0	CERNIERA SUP. ALLUMINIO VETRO
92	VM1231A0	CERNIERA INF. ALLUMINIO VETRO
93	VM1236A0	FERMA VETRO INTERNO INF. XVC204/304/504
94	VM1235A0	FERMA VETRO INTERNO SUP. XVC204/304/504
95	VM1310A0	SCATOLA COPRI MORSETTIERA XB/XV/XVC/XG
96	VM1460A0	COPERCHIO DX SCROCCO PORTA XBC/XVC
97	VM1461A0	COPERCHIO SX SCROCCO PORTA XBC/XVC
98	VM1465A0	COPERCHIO SONDA TEMPERATURA CHEFTOP
99	VM1490A0	COPRI VITI MANIGLIA CHEFTOP BAKERTOP
100	VM1505A0	PASSAPARETE CON DIAFRAMMA
101	VM1510A0	BOCCOLA SCANALATA PERNO PORTA XBC/XVC
102	VM1511A0	BOCCOLA LISCIA PERNO PORTA CHEFTOP
103	VM1555A0	SUPPORTO VENTOLA RAFFREDDAMENTO CT-BT
104	VM1556A0	PROTEZIONE VENTOLA RAFFREDDAMENTO CT-BT
105	VM1565A1	PORTA BOBINA INFERIORE VENTURI
106	VM1566A0	PORTA BOBINA SUPERIORE VENTURI
107	VM1635A0	DISCO SUPPORTO MAGNETE

109	VN1030A3	VENTOLA D=196 H=81 39 PALE INOX DADO M8
110	VN1120B0	VENTOLA RAFFREDDAMENTO 12V
111	VN1130A0	MOTORE FORNO 330W 230V 50/60HZ
112	VT1105A0	VETRO INTERNO 633X767X6 BETFL XVC704
113	VT1106B0	VETRO ESTERNO SER. 647X890X4 CTFL XVC705
114	VM1630A0	TAPPO PREMI VETRO INTERNO
115	VM1590A0	STAFFA SPINGIVETRO INTERNO XVC705 XBC805

MOD: XVC705

EXPLODED VIEW DISEGNO ESPLOSO



DESCRIPTION

1	OD1910A0	XVC305/505/705 STAINLESS STEEL COVER
2	OD1905A0	XVC705 STAINLESS STEEL LEFT SIDE PANEL
3	OD1906A0	XVC705 STAINLESS STEEL RIGHT SIDE PANEL
4	OF1320A0	XVC705 STAINLESS STEEL BACK PANEL
5	OG1365A0	XVC705 STAINLESS STEEL FAN GUARD
6	OG1376A0	XVC705 ST. STEEL FAN GUARD SPACER
7	OH1450A0	XB-XV-XG ST. STEEL MUFFLE FRONT CORNER
8	OH2551A0	XBC/XVC ST. STEEL COVER FOR DRAIN PIPE
9	OH2650A0	XBC/XVC ST. STEEL INTERNAL GLASS HINGE
10	OH2560A0	XBC/XVC ZINC PLAT. DOOR COUNTERBRACKET
11	OH2655A1	STAINL. STEEL DRIP DRAIN TUBE INT-D=6
12	OH3790A0	CHIMNEY HOLDING PLATE
13	OH4470A0	XVC3/5/705 ST. ST. EL. COMPONENTS PANEL
14	OH4305A1	ST. STEEL SEALING DISC FOR MOTOR SHAFT
15	OH4310A0	MOLDED ST. STEEL HEAT-GUARD FOR PANEL
16	CE1310A1	POWER - CONTROL BOARD CONNECTING CABLE
17	CE1665A0	LED 1 MT POWER SUPPLY CABLE
18	CE1285A0	EMI ROUND FERRITE MOD.2643801502
19	EL1020A0	INTERMEDIATE T" CONNECTION ø8
20	EL1055A0	STRAIGHT REDUCTION FROM D=10 TO
21	EL1210A0	J. GUEST STRAIGHT END CONNECTION
22	EL1252A0	ONE INLET WATER VALVE J.G.CONN.
23	CE1355A1	CABLE 5 X 2,5 MMG H07RNF L = 1,5 MT
24	MR1004A0	
25	V11035A1	CHROMIUM PLATED BRASS NUT M6x12,5
26	EL1185A0	ELBOW CONNECTION J. GUEST Ø8 - Ø8
27	EL1195A0	ELBOW UNION WITH J.GUEST TERMINAL
28	EL1360A1	THREE-STAGE WATER SOLENOID VALVE
29	EL1370A0	DYNAMIC PRESSURE REDUCER 2 Bar
30	EL1375A0	Ø8 MESH-100 WATER FILTER
31	GN1085A1	PTFE+CARB SEALING 145X28X1
32	GN1140A1	MOLDED MOTOR SUPPORT GASKET
33	GN1180A0	INTERNAL GLASS HINGE CARBOGRAPHITE
34	GN1275A0	BLACK SILICON XBC/XVC CHIMNEY SEALING
35	GN1285A0	NTC TEMPERATURE PROBE SEALING
36	GN1200A0	3/4 CONNECTION SEAL D=24 RUBBER+NET
38	GN1326A0	ELEMENT SEALING 70X22X0,8
39	GN1000B0	BLACK DOOR SEAL 50 SHORE OVENS XB-XG-XV
40	GRL1230A0	10 GN1/1 ST. STEEL RIGHT LATERAL SUPPORT
41	GRL1231A0	10 GN1/1 ST. STEEL LEFT LATERAL SUPPORT
42	VM1180A0	HANDLE HAFT XVC204/304/504/704
43	PD1001A0	FOOT 35X35 H26 GREY PLASTIC+RUBBER
44	LP1003B0	LEB LIGHTING BAR L600
45	PE1710A0	MOTOR REVOLUTIONS SENSOR
47	PE1740A0	CONTROL BOARD PE1705 + BOARD COVER
48	TB1815A0	WHITE PE PIPE 7,93X4,75
49	PE1740A0	CONTROL BOARD PE1705 + BOARD COVER
50	RC1170A1	STAINLESS STEEL NUT M14 H=8 CH=22
51	RC1210A1	3/4 FEM. UNION+ FILTER + NONRETURN VALVE
52	RS1205A0	6 TURNS 2+2+1,6 KW 230 V HEATING ELEMENT
54	RS1215A0	147 W 105 V 1 TURN HEATING ELEMENT
55	TR1136A0	

56	TB1195A0	XVC705 ST. STEEL RIGHT DOOR COLUMN
57	TB1196A0	XVC705 ST. STEEL LEFT DOOR COLUMN
58	TB1220A0	XVC305/505/705 ST. STEEL DOOR UPPER BAR
59	VE1020A1	MAGNETIC DOOR MICROSWITCH
60	TB1221A0	XVC305/505/705 ST. STEEL DOOR LOWER BAR
61	VE1075A0	CABLE PRESS FV 268 RO
62	TB1515A0	STAINLESS STEEL EXTERNAL WATER
63	TB1925A0	XVC705 VENTURI SILICON PIPE D25
64	TB1745A0	XVC205/305 CENTRAL INT. WATER PIPE
65	TB1756A0	XVC705 INTERNAL LEFT WATER PIPE
66	TF1010A0	TEFLON BUSHING FOR INTERNAL GLASS
67	TR1041A2	MOLDED CORE PROBE L=2000
68	VM1075A1	PLASTIC CLIP TO FIX CONTACTORS
69	TR1105A0	TEMPERATURE PROBE PT100 L=1000
70	VM1160A1	XVC204/304/504/704 LOWER DOOR BRACKET
71	VM1165A1	XVC204/304/504/704 UPPER DOOR BRACKET
72	VM1166A0	CAP FOR DOOR UPPER STIRRUP XVC204/304/5
73	VE1030A1	MAGNET FOR DOOR MICROSWITCH D=22,9mm
74	VE1115A0	MINI CONTACTOR WITH 4 POLES 20 A 230 V
75	VE1565A0	
76	VM1190A1	RIGHT DOOR SPRING LATCH XVC204/304/504/
77	VM1191A1	LEFT DOOR SPRING LATCH XVC204/304/504/7
78	VM1192A0	DOOR SPRING LATCH CAP XVC204/304/504/704
79	VM1195A0	HOLES BLANKING PLATE XVC204/304/504/704
80	VE1360A0	230V - 12V 60VA TRANSFORMER
81	VM1201A1	MAGNETIC SUPPORT PLATE FOR DOOR MICROSW.
82	VE1110A0	CONDENSER 6,3 µF 450VAC 50/60Hz
83	VM1216B0	DRIP TRAY XVC304/504/704
84	VM1220A0	CLIP TO FIX DRIP TRAY C.T.
85	VM1170B0	DOOR UPPER FULCRUM-CAP XVC204/304/504/70
86	VM1171B0	XVC204/304/504/70 DOOR LOWER FULCRUM-CAP
87	VM1175A0	DOOR COLUMN BLANKING CAP XVC204/304/504
88	VM1206B0	DOOR DROP PRESERVER FORM XVC304/504/704
89	VM1260A0	90 °C CURVED DRAIN PIPE
90	VM1750A0	
91	VM1230A0	UPPER ALUMINIUM HINGE FOR INTERNAL
92	VM1231A0	LOWER ALUMINIUM HINGE FOR INTERNAL
93	VM1236A0	LOWER HOOK TO STOP INNER GLASS
94	VM1235A0	UPPER HOOK TO STOP INNER GLASS
95	VM1310A0	COVER FOR TERMINAL BOX XB/XV/XVC/XG
96	VM1460A0	XBC/XVC RIGHT DOOR LATCH CAP
97	VM1461A0	XBC/XVC LEFT DOOR LATCH CAP
98	VM1465A0	CHEFTOP TEMPERATURE PROBE COVER
99	VM1490A0	CHEFTOP/BAKERTOP HANDLE SCREWS COVER
100	VM1505A0	WALL PASSING WITH DIAPHRAGM
101	VM1510A0	XBC/XVC GROOVED DOOR PIN BUSHING
102	VM1511A0	XBC/XVC SLEEK DOOR PIN BUSHING
103	VM1555A0	XBC-XVC COOLING FAN SUPPORT
104	VM1556A0	XBC-XVC COOLING FAN GUARD
105	VM1565A1	LOWER VENTURI COIL SUPPORT
106	VM1566A0	UPPER VENTURI COIL SUPPORT
107	VM1635A0	MAGNET HOLDING DISC

109	VN1030A3	ST. STEEL FAN D=196 H=81 39 BLADES
110	VN1120B0	12V COOLING DOWN FAN
111	VN1130A0	330W 230V 50/60HZ MOTOR
112	VT1105A0	INNER GLASS 633X767X6 BETFL XVC704
113	VT1106B0	XVC705 EXTERNAL GLASS 647X890X4
114	VM1630A0	INTERNAL GLASS PUSHING CAP
115	VM1590A0	XVC705 XBC805 GLASS PUSHING BRACKET

MOD: XVC705

**EXPLODED VIEW
DISEGNO ESPLOSO**

