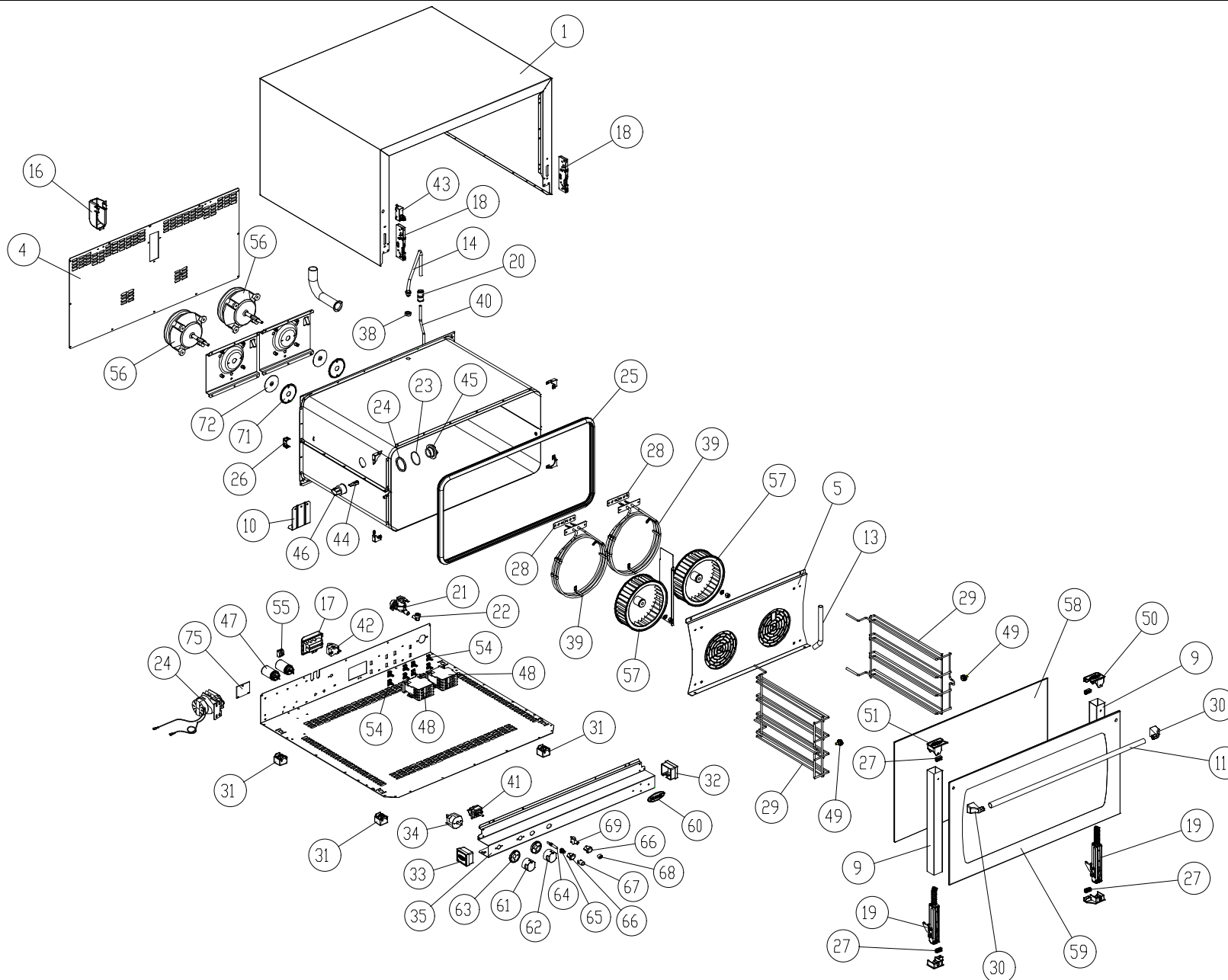


MOD: XF193

EXPLODED VIEW DISEGNO ESPLOSO



LEGEND - LEGENDA

| | | | |
|----|-----------|----|----------|
| 1 | OD1285CO | 56 | VN1000B0 |
| 4 | OF1095A1 | 57 | VN1025A2 |
| 5 | OG1125B1 | 58 | VT1070B0 |
| 9 | OH1425B0 | 59 | VT1071A2 |
| 10 | OH1455A1 | 60 | ED1070A0 |
| 11 | OH1930A0 | 61 | MN1090B0 |
| 13 | OH1975B0 | 62 | MN1091A0 |
| 14 | OH1990A1 | 63 | MN1095A0 |
| 15 | OH2015A1 | 64 | VE177 |
| 16 | VM1065A0 | 65 | VE162 |
| 17 | CE1130A1 | 66 | VE1170A0 |
| 18 | CR1000A0 | 67 | VE164 |
| 19 | CR1050A1 | 68 | VE175 |
| 20 | EL1055A0 | 69 | VE169 |
| 21 | EL1085A0 | 72 | OH3020A0 |
| 22 | EL1195A0 | 72 | GN1140A0 |
| 23 | GN1055A0 | 75 | TM1000A0 |
| 24 | GN1065A1 | | |
| 24 | VN032 | | |
| 25 | GN1110A2 | | |
| 26 | OH318A | | |
| 27 | GN1265A0 | | |
| 28 | GN224 | | |
| 29 | GRL1025A0 | | |
| 30 | MG1015A0 | | |
| 31 | PD1001A0 | | |
| 32 | VM1115A0 | | |
| 33 | VM1116A0 | | |
| 34 | TM1005A0 | | |
| 35 | OD1425CO | | |
| 38 | RC1170A1 | | |
| 39 | RS1090A1 | | |
| 40 | TB008 | | |
| 41 | TR006 | | |
| 42 | TR255B | | |
| 43 | VE1295A0 | | |
| 44 | VE1005A1 | | |
| 45 | VE1010A1 | | |
| 46 | VE1015A1 | | |
| 47 | VE221 | | |
| 48 | VE1095A0 | | |
| 49 | V11035A1 | | |
| 50 | VM1045B0 | | |
| 51 | VM1046B0 | | |
| 54 | VM1075A1 | | |
| 55 | VM250 | | |

MOD: XF193

EXPLODED VIEW DISEGNO ESPLOSO



DESCRIZIONE CODICI

| | | |
|----|-----------|--|
| 1 | OD1285C0 | MANTELLO INOX L.M. ROSSELLA |
| 4 | OF1095A1 | SCHIENA ZINCATA L.M. ROSSELLA |
| 5 | OG1125B1 | CARTER ARIA INOX L.M. ROSSELLA |
| 9 | OH1425B0 | COLONNINA SX/DX PORTA L.M. ARIANNA-ROSSELLA |
| 10 | OH1455A1 | STAFFA SOSTEGNO MUFFOLA L.M. |
| 11 | OH1930A0 | TUBO MANIGLIA D-est=18 Sp=1 L=718 INOX L.M. 800 |
| 13 | OH1975B0 | TUBO INTERNO UMIDITA D=16 SP=1 INOX L.M. ROSSELLA |
| 14 | OH1990A1 | TUBO ESTERNO UMIDITA + RACCORDO INOX SALDATO LM |
| 15 | OH2015A1 | PROFILO SOSTEGNO MOTORE XV203G/403G L.M. |
| 16 | VM1065A0 | CUFFIA COPRI CAMINO FUMI L.M. |
| 17 | CE1130A1 | CAVO 5X1,5MMQ H07RN-F L=1,5M + MORS.K1/6 |
| 18 | CR1000A0 | ATTACCO CERNIERA PORTA FORNO RIBALTA L.M. |
| 19 | CR1050A1 | CERNIERA PORTA FORNO RIBALTA XVCI04-LM ROSSELLA |
| 20 | EL1055A0 | RIDUZIONE J.G. DA D=10 A D=8 PM201008E |
| 21 | EL1085A0 | ELETR. SING. ATT. J.GUEST INCORPORATO CON RID. MARR.TARA |
| 22 | EL1195A0 | RACCORDO A GOMITO CON J.GUEST CODOLO D8 - D8 |
| 23 | GN1055A0 | OR 46x2 VMQ 70 ROSSO |
| 24 | GN1065A1 | GUARNIZIONE PORTALAMPADA DE=53.2 DI=44.2 SP=3.2 PTFE P |
| 24 | VN032 | INVERTITORE P19.5J.02.H6.17 -0198 |
| 25 | GN1110A2 | GUARNIZIONE PORTA PROFILO 248 LINEMISS-XCH030 |
| 26 | OH318A | SOSTEGNO BULBO STANDARD '02 |
| 27 | GN1265A0 | GUARNIZIONE VETRO INTERNO XVCO54/104 |
| 28 | GN224 | GUARN.PTFE+CARB 100x22x0,8sp-c/fori 1999 |
| 29 | GRL1025A0 | GRIGLIA LATERALE DX/SX CROMATA 4TG 600x400 L.M. ROSSELL |
| 30 | MG1015A0 | TERMINALE MANIGLIA L.M. |
| 31 | PD1001A0 | PIEDINO 35X35 H26 PLASTICA+GOMMA GRIGIO |
| 32 | VM1115A0 | TAPPO DX CRUSCOTTO COMANDI IN PLASTICA L.M. MANUAL |
| 33 | VM1116A0 | TAPPO SX CRUSCOTTO COMANDI IN PLASTICA L.M. MANUAL |
| 34 | TM1005A0 | TIMER MI2 60 MIN 250V 16A |
| 35 | OD1425C0 | CRUSCOTTO COMANDI MANUALE INOX L.M. 800 |
| 38 | RC1170A1 | DADO M14 H=8 CH=22 INOX |
| 39 | RS1090A1 | RESISTENZA CIRCOLARE D=230 3 SPIRE H78 2900W 230V |
| 40 | TB008 | TUBO PE 7,93x4,75 TRASPARENTE |
| 41 | TRO06 | TERMOSTATO 50-295°C 55.19052.861 |
| 42 | TR255B | TERMOSTATO SIC. +UNIPOL. 330°C Ty95H L=1300mm |
| 43 | VE1295A0 | MICROINTERRUTTORE PORTA MK 16A 230V UL |
| 44 | VE1005A1 | LAMPADA ALOGENA 40W 230V |
| 45 | VE1010A1 | VETRO COPRI LAMPADA TEMPERATO ANTISHOCK |
| 46 | VE1015A1 | PORTA LAMPADA SERIE 2 PER LAMPADA ALOGENA |
| 47 | VE221 | CONDENSICAR PRL 5uF 450V FASTON |
| 48 | VE1095A0 | TELERUTTORE GE 25A 230V 50/60 Hz CL01A400T6 |
| 49 | VI1035A1 | NOTTOLINO M6x12,5 CON TAGLIO OTT.CROM.FERMA GRIGIE X |
| 50 | VM1045B0 | TAPPO SUP. DX COLONNINA PORTA VETRO INTERNO L.M. |
| 51 | VM1046B0 | TAPPO SUP. SX COLONNINA PORTA VETRO INTERNO L.M. |
| 54 | VM1075A1 | CLIP DI FISSAGGIO PER TELERUTTORI |
| 55 | VM250 | MORSETT.A PETTINE |

| | | |
|----|----------|---|
| 56 | VN1000B0 | MOTORE COND.5uF 200W ALB.M8 CONN.5 POLI |
| 57 | VN1025A2 | VENTOLA D=196 H=61 38 PALE INOX DADO M8 |
| 58 | VT1070B0 | VETRO INTERNO 715X415X6 BETFL L.M. ROSSELLA |
| 59 | VT1071A2 | VETRO ESTERNO SER. GIALLO 798X424X5 TFL L.M. ROSSELLA |
| 60 | ED1070A0 | ETICHETTA UNOX ELLISSE 78x33 ARGENTO CON BORDO EST. |
| 61 | MN1090B0 | MANOPOLA SERIGR. TIMER 0-60 MIN NICHELATA SATINATA |
| 62 | MN1091A0 | MANOPOLA SERIGR. TERMOSTATO 80-300°C NICHELATA SATIN |
| 63 | MN1095A0 | GHIERA CON INDICE STAMPATO NECHELATA SATINATA L.M. MA |
| 64 | VE177 | LUCE SPIA FLUORO STD 230V |
| 65 | VE162 | SUPPORTO LAMPADA INTERNO |
| 66 | VE1170A0 | SUPPORTO DI6 ELLITTICO NICHEL OPACO |
| 67 | VE164 | GEMMA VERDE TERMOMETRO ORO |
| 68 | VE175 | TASTO ARGENTO OPACO NUVOLETTA ORO |
| 69 | VE169 | PULSANTE UNIPOLARE NA |
| 72 | OH3020A0 | DISCO TENUTA ALBERO MOTORE INOX |
| 72 | GN1140A0 | GUARNIZIONE PORTAMOTORE STAMP. ALBERO MOT. D10 XB-X |
| 75 | TM1000A0 | SUONERIA ELETTRONICA 15 SEC 120 - 230 V |

DESCRIPTION

| | | |
|----|-----------|---|
| 1 | OD1285C0 | STAINLESS STEEL COVER L.M. ROSSELLA |
| 4 | OF1095A1 | ZINCED BACK PANEL L.M. ROSSELLA |
| 5 | OG1125B1 | STAINLESS STEEL FAN GUARD L.M. ROSSELLA |
| 9 | OH1425B0 | LEFT/RIGHT DOOR COLUMN L.M. ARIANNA-ROSSELLA |
| 10 | OH1455A1 | |
| 11 | OH1930A0 | STAINLESS STEEL HANDLE TUBE D-est=18 Sp=1 L=718 L.M. ELENA- |
| 13 | OH1975B0 | INTERNAL WATER PIPE D=16 Th=1 STAINLESS STEEL L.M. ROSSELLA |
| 14 | OH1990A1 | EXTERNAL WATER PIPE + STAINLESS STEEL WELDED CONNECTION |
| 15 | OH2015A1 | MOTOR SUPPORT PROFILE XV203G/403G/L.M. |
| 16 | VM1065A0 | PLASTIC COVER FOR FUMES CHIMNEY L.M. |
| 17 | CE1130A1 | |
| 18 | CR1000A0 | HINGE LATCH L.M. |
| 19 | CR1050A1 | |
| 20 | EL1055A0 | J.G. REDUCTION FROM D=10 TO D=8 PM201008E |
| 21 | EL1085A0 | WATER SINGLE ELECTROVALVE WITH RAPID CONNECTION & WAT |
| 22 | EL1195A0 | ELBOW UNION WITH J.GUEST TERMINAL D8 - D8 |
| 23 | GN1055A0 | OR 46x2 VMQ 70 RED |
| 24 | GN1065A1 | SEAL FOR LAMP GLASS COVER (PURE PTFE) DE=53.2 DI=44.2 TH= |
| 24 | VN032 | REVERS.SWITCH MOTOR P19.5J.02.H6.17 |
| 25 | GN1110A2 | DOOR GASKET PROFILE 248 LINE MISS-XCH030 |
| 26 | OH318A | STANDARD BULB SUPPORT '02 |
| 27 | GN1265A0 | INTERNAL GLASS SEAL XVCO54/104 |
| 28 | GN224 | PTFE+CARB 100x22x0,8sp-w/holes 1999 GASKET |
| 29 | GRL1025A0 | RIGHT/LEFT LAT.GRID CHROMIUM-PLATED 4 TRAYS 600x400 L.M |
| 30 | MG1015A0 | HANDLE END L.M. |
| 31 | PD1001A0 | FOOT 35X35 H26 GREY PLASTIC+RUBBER |
| 32 | VM1115A0 | RIGHT PLASTIC LATERAL CAP FOR CONTROL PANEL L.M. MANUAL |
| 33 | VM1116A0 | LEFT PLASTIC LATERAL CAP FOR CONTROL PANEL L.M. MANUAL |
| 34 | TM1005A0 | TIMER MI2 60 MIN 250V 16A |
| 35 | OD1425C0 | |
| 38 | RC1170A1 | STAINLESS STEEL NUT M14 H=8 CH=22 |
| 39 | RS1090A1 | CIRC.HEAT. ELEMENT D=230 3 TURNS H78 2900W 230V |
| 40 | TB008 | TRANSPARENT TUBE PE 7,93x4,75 |
| 41 | TRO06 | THERMOSTAT 50-295°C 55.19052.861 |
| 42 | TR255B | SAFETY THERMOSTAT+UNIPOL. 330°C Ty95H L=1300mm |
| 43 | VE1295A0 | |
| 44 | VE1005A1 | HALOGEN LAMP 40W |
| 45 | VE1010A1 | TEMPERED LIGHT BULB GLASS COVER |
| 46 | VE1015A1 | LAMP HOLDER SERIE 2 FOR HALOGEN LAMP |
| 47 | VE221 | ICAR CONDENSER PRL 5uF 450V FASTON |
| 48 | VE1095A0 | REMOTE CONTROL SWITCH GE 25A 230V 50/60 Hz CL01A400T6 |
| 49 | VI1035A1 | CHROMIUM PLATED BRASS NUT M6x12,5 TO STOP LATERAL SUP |
| 50 | VM1045B0 | RIGHT UPPER LID FOR COLUMN FOR INTERNAL GLASS L.M. |
| 51 | VM1046B0 | LEFT UPPER LID FOR COLUMN FOR INTERNAL GLASS L.M. |
| 54 | VM1075A1 | PLASTIC CLIP TO FIX CONTACTORS |
| 55 | VM250 | "COMB" TERMINAL BOARD |

| | | |
|----|----------|--|
| 56 | VN1000B0 | MOTOR COND.5uF 200W ALB.M8 CONN.5 TERMINALS |
| 57 | VN1025A2 | FAN D=196 H=61 38 BLADES STAINLESS STEEL NUT M8 |
| 58 | VT1070B0 | INTERNAL GLASS 715x415x6 BTFL L.M. ROSSELLA |
| 59 | VT1071A2 | |
| 60 | ED1070A0 | UNOX ELLIPTICAL STICKER 78x33-SILVER WITH EXTERNAL FRAME |
| 61 | MN1090B0 | |
| 62 | MN1091A0 | SER. NICKEL PLATED THERMOSTAT KNOB 80-300°C L.M. |
| 63 | MN1095A0 | |
| 64 | VE177 | FLUORINE WARNING LIGHT STD 230V |
| 65 | VE162 | INTERNAL PILOT LAMP SUPPORT |
| 66 | VE1170A0 | OPAQUE NICKEL ELLIPTICAL SUPPORT DI6 |
| 67 | VE164 | GREEN PILOT WITH GOLD THERMOMETER SERIGRAPHY |
| 68 | VE175 | OPAQUE SILVER KEY WITH GOLD "CLOUD" SERIGRAPHY |
| 69 | VE169 | UNIPOLAR NA PUSH-BUTTON |
| 72 | OH3020A0 | STAINLESS STEEL SEALING DISC FOR MOTOR |
| 72 | GN1140A0 | MOTOR GASKET |
| 75 | TM1000A0 | ELECTRICAL BUZZER 15 SECS 120 - 230 V |